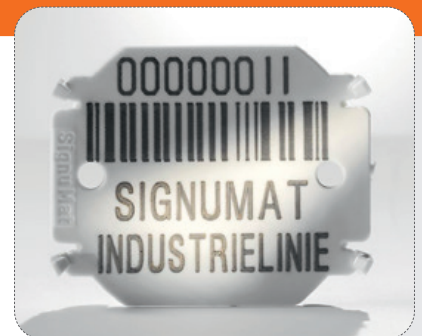


INDUSTRY LINE



LATSCHBACHER

- 1 **BOIL-PROOF** and **SUPER HARD**
- 2 **DISSOLVES** in an alkaline solution
- 3 **THE BEST BARCODE TAG**







THE HIGH-TECH TAGS WITH TOP BARCODE INSCRIPTION

The design and materials of the tags are co-ordinated with the wood processing industry. These tags are printed with a high-quality barcode. As materials we use the best quality technical plastics. The labeling is resistant to abrasion.

DESIGNATION	DESCRIPTION	*	TYPE					TECHNICAL DESCRIPTION
			01	02	03	04	06	
BARCODE BLACK TYPE 02								
	<ul style="list-style-type: none"> - best barcode legibility - with barcode 128 or 2/5 interleaved 	WE	●	●	●	●	The black tag with the white barcode offers the best contrast. You get the most reliable scanner results with this tag. TIP: A barcode that supplies the best scanner results. Recommended for all barcode applications, particularly for automatic scanning.	
		KS	●					●
		LS			●			
RESISTANT WHITE TYPE 04								
	<ul style="list-style-type: none"> - for frozen hardwood - with barcode 128 or 2/5 interleaved - boil-proof during the veneer process 	WE	●	●	●	●	Extremely durable plastic in radiant WHITE with a highly wear resistant custom tailored barcode and plain text label. TIP: This tag is suitable for very cold regions and is the best recommendation for valuable veneer logs.	
		KS	●					●
		LS			●			
RESISTANT GREEN TYPE 04								
	<ul style="list-style-type: none"> - for frozen hardwood - with individual labeling - boil-proof during the veneer process 	WE	●		●		Extremely durable plastic in radiant GREEN with a highly wear resistant custom tailored barcode and plain text label. TIP: This tag is suitable for very cold regions and is the best recommendation for valuable veneer logs.	
		KS						
		LS						
RESISTANT YELLOW TYPE 03								
	<ul style="list-style-type: none"> - for frozen hardwood - with barcode 128 or 2/5 interleaved - boil-proof during the veneer process - highly visible on wood 	WE	●	●	●	●	Extremely durable plastic in radiant YELLOW with a highly wear resistant custom tailored barcode and plain text label. TIP: This tag is suitable for very cold regions and is the best recommendation for valuable veneer logs.	
		KS	●					●
		LS				●		
KING SIZE BARCODE BLACK TYPE 06								
	<ul style="list-style-type: none"> - for pallet marking - for cable drum marking - also available with colored print - also with barcode - available in RESISTANT WHITE, RESISTANT YELLOW and BARCODE BLACK 	WE				●	With its 47x42 mm, the KING SIZE tag is the largest plastic tag and is therefore especially suitable for printing larger quantities of text. The tags only fit in the new DOUBLE SAFE magazine. TIP: With curved prong, for round wood marking printed with an especially large barcode.	
		KS						●
		LS						

THE HIGH-TECH TAGS WITH TOP MATERIAL PROPERTIES

Each model fulfils special requirements: they are suitable for paper processing, can be marked with many different texts or are extremely long-lived metal plates – the Signumat Industry Line 02 fulfils all modern requirements.

DESIGNATION	DESCRIPTION	*	TYPE					TECHNICAL DESCRIPTION
			01	02	03	04	06	
NATURALLY WHITE without BARCODE TYPE 01								
	<ul style="list-style-type: none"> - the plastic dissolves during processing in the paper industry - with registered logo – PP – (Pulp and Paper) 	WE	●	●		●		<p>The naturally white plastic is processed without additives or dye. The wear resistant, hot-stamped labeling is available in all common colors. The organic plastic dissolves if the tag comes into contact with an alkaline or acid solution.**</p> <p>TIP: For wood from which sections or the whole log are supplied to the paper industry.</p>
		KS						
		LS						
PAPER BLACK TYPE 02								
	<ul style="list-style-type: none"> - the plastic dissolves during processing in the paper industry - with registered logo – PP – (Pulp and Paper) 	WE		●		●		<p>The tags, made of natural finished plastic, pigmented with natural color are imprinted with laser technology and available with barcode 128 or 2/5. The organic plastic dissolves if the tag comes into contact with an alkaline or acid solution.**</p> <p>TIP: For wood from which sections or the whole log are supplied to the paper industry.</p>
		KS						
		LS						
PAPER BLACK 2D TYPE 04								
	<ul style="list-style-type: none"> - the plastic dissolves during processing in the paper industry - with registered logo – PP – (Pulp and Paper) - with reliably scannable 2D code (Data Matrix code / QR code) 	WE		●		●		<p>The tags, made of untreated plastic and pigmented with natural color, are imprinted with laser technology and available with 2D code (Data Matrix code / QR code). The organic plastic dissolves if the tag comes into contact with an alkaline or acid solution.**</p> <p>TIP: For wood from which sections or the whole log are supplied to the paper industry.</p>
		KS						
		LS						
METAL TAGS TYPE 02 METALL								
	<ul style="list-style-type: none"> - galvanized - especially durable - for the marking of masts 	WE		●				<p>The tags are made of galvanized sheet steel and have a thickness of approx. 0.6 cm. The metal tags have the same size as the plastic tags, MODEL 02, and therefore fit in the standard pick-up magazine. However, a special hammer with magnetic head is required for hitting in the tag, the Signumat Hammer 3M.</p> <p>TIP: The tags are especially suitable for the permanent marking of masts and posts.</p>
		KS		●				
		LS						

* **WE** CURVED PRONG: for end-grain wood (standard)

KS SHORT PRONG: for grain-cut timber without bark

LS LONG PRONG: for standing trees through the bark



** CAUTION: Only tags with the protected mark – PP – reliably fulfil this high quality requirement. Paper industry certificates available upon request.

Austria

Latschbacher GmbH, A-4484 Kronstorf, Hauptstr. 8/10
Phone: +43 (0) 7225 8206-0, Fax: + 43 (0) 7225 8206-10
E-mail: office@latschbacher.com

Germany – South

Latschbacher GmbH, D-83395 Freilassing, Ludwig-Zeller-Straße 44
Phone: +49 (0) 8654 4738-0, Fax: +49 (0) 8654 4738-10
E-mail: office@latschbacher.de

Germany – North

ABIES ITS GmbH, D-37083 Göttingen, Benzstraße 5
Phone: +49 (0) 5514 9803-0, Fax: +49 (0) 5514 9803-29
E-mail: mw@latschbacher.de

Switzerland

Latschbacher AG, CH-8463 Benken ZH, Quarzwerkstrasse 17
Phone: +41 (0) 52 315 2357, Fax: +41 (0) 52 315 2358
E-mail: office@latschbacher.ch

USA

American Signumat Ltd., USA-MD 21030 Cockeysville, 115 Wight Ave, Unit 397
Phone: +1 (0) 410 592 2907, Fax: +1 (0) 443 927 9029
E-mail: signumat@verizon.net

Ukraine

Latschbacher Ukraine Ltd., UA-04074 Kiev, vul. Novozabarska, 2/6, office 424
Phone: +380 (0) 44 500 5580, Fax: +380 (0) 44 500 5580
E-mail: office@latschbacher.com.ua

Brazil

Signumat Tecnologia Florestal Ltda., Rua Ari Barroso, 995 Itoupavazinha, 89066-347 Blumenau-SC
Phone: +55 (0) 47 3338 1188, Fax: +55 (0) 47 3338 7318
E-mail: signumat@signumat.com.br

Poland

Signumat Polska Sp.z.o.o, PL-62-095 Murowana Goslina, Ul. Msciszewska 11
Phone: +48 (0) 61 8113042, Fax: +43 (0) 61 8113055
E-mail: office@signumat.pl

Croatia

Signumat jugozapad d.o.o., HR-10000 Zagreb, Prilaz Gjüre Deželica 18
Phone: +385 (0) 1 4810 784, Fax: +385 (0) 1 4852 732